

INDEX

Advertisements Page 14

Annual Conference Update
Page 11

**Continuing Education
Update** Page 11

Delegate Assembly
Page 12
and 13

**Executive Director's
Column** Cover

LABSWE
Page 5-6

LA Licensing Board News
Page 3

National News Page 4,
8 and 9

New Members Page 10

President's Column
Page 2

Regional News Page 7

From the Executive Director



Hello! Greetings! **Ayn Stehr** here – your new Executive Director of the Louisiana Chapter. I joined the staff of NASW-LA on September 25 and had an information-filled (and fun-filled) week with Carmen before her retirement. What can I say about Carmen – we are all so fortunate to have had her as our Executive Director for almost thirteen years! Her dedication to our association and her commitment to the practice of social work have been unwavering; she has been a tireless advocate for us and the individuals and families we serve; she has brought great expertise to the task forces, committees, and work groups on which NASW-LA has a seat; she has inspired volunteers not only to give of themselves and their time and resources, but to also give a little more; she has been a wise and skilled mentor to social work students; and she has been a good friend to many. We will miss her leadership.

WOW – as many have already said – BIG shoes to fill. I am aware that I do not fill those shoes – but I do have a pair which is able to grow as I do - and I trust that we will - with your help.

The Board invited me to attend their annual retreat in September – it was a great opportunity for me to meet board members and obtain an overview of the workings of the Chapter. Special thanks to all of you who have called and emailed your well-wishes and welcomes – I really appreciate your taking the time to do so.

Staff at the Chapter Office are phenomenal – I know you already know that, but reminders never hurt. It is comforting to work with such seasoned staff.

I have been able to attend regional meetings in Alexandria, Baton Rouge and Shreveport thus far - I enjoyed meeting many of you and appreciate the warm welcomes.

The Chapter Office continues its transformation brought on by modernization of our National organization – there have been bumps along the way, but we continue to move forward.

We are finalizing details for our Annual Conference – look for the brochure soon – and register early for a generous discount! If you are not a member or have let your membership lapse, consider joining first and then registering for our conference – another generous discount awaits!

Before I close, I just want to say what an honor it is for me to serve as your Executive Director. Whatever your position, whatever your setting, you help ensure people in need have a voice, are heard, and are helped – what could be more incredible! I look forward to meeting those of you I do not know and catching up with those of you I do. Do not hesitate to be in touch if the Chapter Office can be of assistance.

Wishing all a Happy and Healthy Holiday Season!

Merry Christmas and Happy New Year.

The Chapter Office will be closed Monday, December 25, 2017 through Tuesday, January 2, 2018.



NASW-LA continues to move forward! Ayn W. Stehr, our new Executive Director, has been working tirelessly as she runs from meeting to meeting, participates in NASW-National trainings, finding her way through the requirements of the position, and taking care of the myriad of other tasks necessary for a successful chapter. Ayn is currently in the process of attending each regional meeting. When she is scheduled for your region, attend the meeting and meet her! She is looking forward to meeting each of you!

NASW-LA currently has positions open throughout the state on a number of committees. The committees with current openings include **Social Action, LA PACE, School Social Work Network, Image Building, Conference, CCNLI** and **Membership** Committees. For additional information on each committee and to see what is open in your region, contact your regional chair or representative. Please consider volunteering your time to serve on one, or more, of these committees.

Ayn and I have participated in meetings with the national staff, Dr. Kathryn Wehrmann, President of NASW, and other state presidents and ED's from around the country concerning modernization. We continue to move forward with modifications and extensions set in place as needed by National.

Don't forget to register for the Yellow Book workshops which have begun. The offerings are excellent. The information on each of the workshops and registration can be found on the website at www.naswla.org. Annual Conference registration begins this month. Look for the notices and register early!

We continue to focus on membership with NASW-LA. Considerable discussion was given to this topic at the Board Retreat held in September. The office staff receives thousands of calls from Social Workers across the state and they are responsive to our needs. NASW is the largest organization of Social Workers. Your board members and representatives work very hard on your behalf. Many people use our Facebook page to find resources, ask ethical questions, read relevant articles, post job openings, learn the latest news, voice a concern, or sometimes have a laugh at a funny SW related cartoon. Membership will provide many free or low cost CEUs, opportunities for growth, assistance with ethical questions, newsletters, and much more.

My previous column referenced that we continue to move forward. We are in the process of doing so but we need your involvement to be the best we can be. Join us through your continued membership, encourage others to join (there is an Associate membership for those who are not SWs but in other professions) the many volunteer opportunities available, and Facebook. See you at the workshops, regional meetings, and state conference! Remember that we are here for you! Do not hesitate to contact us!

NASW-LA is seeking input from the membership

in regards as to what is happening in your community.

Send in articles that would be of interest to your fellow social workers around the state. Perhaps someone in the social work field was featured in the local news or was singled out for helping in the community.

Send that information to the Chapter Office at admin@naswla.org with contact information so that approval for re-printing the information can be obtained.

There are so many of us out there doing the little things each day to make this a better place to live and we need to tell their stories. By doing this we not only are acknowledging their service, but it could possibly help someone else in their community. Let us hear from you.

Message from your Regional Chairs:

The regions have begun to make plans and arrangements for the upcoming years regional meetings.

Interested members who would like to help in their region, please contact your regional chair for further information.

Anyone interested in presenting at their own regional meeting or another region, please contact the respective regional chair.

Continue to check the NASW-LA website at www.naswla.org under Regional News to see the most updated information on your regions meetings. You will note that many of the regions do not hold regional meetings in the summer months.

Thank you to all of our regional chairs for their hard work and the support that they give all of us.

Dear Colleagues,

“Career Protection” is having a professional association with the resources to protect the practice of social work. Why is malpractice insurance not enough? Because your malpractice insurer will not do the following - but NASW at the national level and through the Louisiana Chapter will:

- ◆ Provide highly discounted quality Continuing Education programs that are presented at regional locations and an outstanding Annual Conference.
- ◆ Provide consultation on ethical, practice, and career issues.
- ◆ Deliver critical, up-to-date information on laws and regulations that affect your practice.
- ◆ Continue to be a vigilant voice for Social Work practice and the profession at the Louisiana State Capitol and in Washington, DC.
- ◆ Work with stakeholders who have similar positions on issues that are important to the social work profession.
- ◆ Serves as a key resource for the profession of social work on issues and practice concerns.

I know that for some of you there has been concern regarding professional liability insurance and at least one carrier has suggested that social workers only need their liability policy to have practice protection. I do not know if your decision on joining or renewing membership is based on this issue but if that is the case, keep in mind that no matter where you get your malpractice coverage, no insurer will advocate for you at the Legislature, in Congress or with the executive branch. Protecting your career is more than having liability coverage; it requires having an organization that is working to protect the social work profession.

Without a strong NASW, our profession will lose ground, our jobs and practices will slowly erode, taken over by “related degrees” because everyone thinks they can do social work. As a practicing social worker “Career Protection” comes with joining and maintaining your NASW membership.

When your NASW renewal comes due, remember you are not just renewing a membership – you are buying yourself “Career Protection” from the best available source! Your NASW membership assures a strong Louisiana Chapter and a strong Louisiana Chapter assures that we are here to support you.

Sincerely,

Ayn W. Stehr

Licensing Board Information

LOUISIANA STATE BOARD OF SOCIAL WORK EXAMINERS

18550 Highland Road, Suite B, Baton Rouge, LA 70809 * 225-756-3470 or 1-800-521-1941 (Louisiana Only)

Dates for 2018 LABSWE Board Meetings

(All meetings are held at the Baton Rouge Board Office - Meetings begin at 8:30 am)

*January 12 February 16 March 16 April 20 June 1 July 13
August 17 September 21 October 26 December 7*

Dates for 2018 LABSWE BACS ORIENTATION MEETINGS

January 5 March 9 May 18 July 27 September 7 November 2

[Click here to visit the Licensing Board's website at www.labswe.org](http://www.labswe.org)

An Hour with Private Practice

For your information, the following link is to the schedule of *An Hour With Private Practice* for the second half of 2017:

<http://www.socialworkers.org/includes/newIncludes/homepage/documents/Schedule%20for%20July%20thru%20Dec%202017.pdf>

Give the Gift of NASW Membership

Share your appreciation for NASW and its benefits with your family, friends and colleagues. Give the gift of membership! Your gift recipient will enjoy:

- Free and discounted Continuing Education programs
- Personal assistance with Licensing and social work practice questions
- Consultations for Legal and Ethical dilemmas
- Advocacy for social workers and their clients
- And much more!

NASW Membership includes National, State and Local affiliation, all for the same price:

- Information from the National office on Ethics, Legal issues, insurance reimbursement, Specialty Practice Sections of Social Work, Medicare and Medicaid
- Information from the State Licensure
- Continuing Education programs,
- Advocacy with the state legislature
- Activities with Local Units including networking events, educational programs

Give the Gift of NASW Membership for Christmas, Hanukkah, Birthdays, or Graduation.

Go to <http://www.socialworkers.org/join.asp> or contact NASWLA for more information. It may be the best gift you'll ever give.

Advance Care Planning/LaPOST Updates

Since 2010, the Louisiana Health Care Quality Forum has championed advance care planning and the Louisiana Physician Orders for Scope of Treatment (LaPOST) document with a commitment to educate health care professionals, patients and caregivers. The [LaPOST website](#) features an array of tools that are available for health care training purposes as well as information for health care consumers.

- One of the newest resources is an 11-minute video entitled, [Having the Conversation](#). This informational program is designed to help patients, family members and caregivers discuss and document health care wishes at the end of life.
- You can order padded LaPOST documents (100 copies per pad) from the website free of charge and pay only shipping/handling fees. Click [here](#) for more information or to place an order.

Letter to LABSWE Regarding Supervision

July 20, 2017

Louisiana State Board of Social Work Examiners
18550 Highland Road, Suite B
Baton Rouge, LA 70809

To Whom It May Concern:

RE: Tracking of Supervisory Plan and Other Issues

Recently, I have been contacted by two of my members who have expressed concerns about the status of their supervisory plans that were submitted in early March but were in a folder and not sent back to because a staff person was out on extended sick leave. As you are aware, the approval of their plan allows them to begin the next phase of their professional journey. When the transmittal of their approved plan did not occur until the staff person returned to work, their professional trajectory was delayed until early July. Our question is, why is there no tracking system for this type of mail and why was not another staff person assigned to cover this workload when someone is out on extended leave?

Another issue is the time frame for advising social workers when they can schedule tests. One of my members is waiting for the LABSWE's authorization to schedule her retake of her LCSW exam. How long should one expect to wait for that response? Again, is there an internal tracking for these types of requests?

One member is alarmed now that her BACS is called into question for a period of 2017. She indicates that she has maintained her training and is trying to get this clarified as the individuals she supervises are now at risk of not being able to complete their supervision. If a social worker is designated as a BACS during their licensed period, when would that designation expire?

Thank you for your time and cooperation of this matter.

Sincerely,

Carmen D. Weisner

Carmen D. Weisner, LCSW, ACSW
Executive Director

LABSWE's Response to Supervision Letter



LOUISIANA STATE BOARD of SOCIAL WORK EXAMINERS

August 14, 2017

Carmen Weisner, Executive Director
NASW-LA Chapter
700 North 10th Street
Suite 200
Baton Rouge, LA 70802

Dear Ms. Weisner:

Thank you for your letter dated July 20, 2017, regarding two members' concerns. As you know because you were present, the Louisiana State Board of Social Work Examiners received this letter at their meeting on July 21, 2017.

The Supervision Agreement/Plan of Supervision review process has been difficult since getting backlogged last renewal season. I am hopeful that the elimination of requiring a new Plan of Supervision with every new supervisory experience, will expedite the process as there will be less plans to review. We are also implementing "checks and balances" internally to ensure that someone's Supervision Agreement/Plan of Supervision does not get overlooked.

Retake applications are processed every five to ten business days. We do have a tracking system for retake applications. If someone has a question about their application, they should contact Holly Freeman at hfreeman@labswe.org.

The BACS designation lapses at the end of a two year collection period, if the BACS does not submit documentation of completing three hours of continuing education in the area of clinical supervision within the collection period. For example, if a LCSW is issued the BACS designation on August 14, 2017, he/she must complete three hours of continuing education in clinical supervision between July 1, 2018 and June 30, 2020, to maintain the designation.

Please let me know if you have any other questions.

Sincerely,

Emily DeAngelo
Administrator

18550 HIGHLAND ROAD, SUITE B, BATON ROUGE, LOUISIANA 70809
Phone: 225-756-3470 or in LA 1-800-521-1941 Fax: 225-756-3472
Email: socialwork@labswe.org Web Site: <http://www.labswe.org>

Regional News

ALEXANDRIA REGION

By: Latonya Charles, LMSW, Chair

Check the website and Facebook for Regional Meetings in 2017-2018

There will be a \$10.00 per CEU charge for non-members wishing to receive CEU's. Any non-member not wanting CEU's may attend free of charge. For more information contact the Latonya Charles, LMSW, Chair at latonya@bayoumentalhealth.com

BATON ROUGE REGION

By: Carmen P. Williams, Ph.D., LMSW, Chair

Check the website and Facebook for Regional Meetings in 2017-2018

There will be a \$10.00 per CEU charge for non-members wishing to receive CEU's. Any non-member not wanting CEU's may attend free of charge. For additional information contact: Carmen P. Williams at naswbatonrouge@gmail.com

FLORIDA PARISHES

By: Adrienne Garner, LCSW-BACS, Chair

Check the website and Facebook for Regional Meetings in 2017-2018

There will be a \$10.00 per CEU charge for non-members wishing to receive CEU's. Any non-member not wanting CEU's may attend free of charge. For more information, please contact Adrienne Garner, Florida Parishes Regional Chair at floridaparishes.sws@gmail.com

HOUMA THIBODAUX REGION

By: Jamilah Olivier, LCSW-BACS, MCJ, Chair

Check the website and Facebook for Regional Meetings in 2017-2018

There will be a \$10.00 per CEU charge for non-members wishing to receive CEU's. Any non-member not wanting CEU's may attend free of charge. For more information, please contact Adrienne Garner, Florida Parishes Regional Chair at floridaparishes.sws@gmail.com

LAFAYETTE REGION

By: Crystal Rodriguez, LMSW, Chair

Check the website and Facebook for Regional Meetings in 2017-18

There will be a \$10.00 per CEU charge for non-members wishing to receive CEU's. Any non-member not wanting CEU's may attend free of charge. For more information, please contact Crystal Rodriguez, LCSW at c.l.rod@hotmail.com

LAKE CHARLES REGION

By: Phyllis Sensat, LCSW, Chair

Meeting are the first Friday of each month from 11:30 am - 1:00 pm in the conference room of Heritage Square.

There will be a \$10.00 per CEU charge for non-members wishing to receive CEU's. Any non-member not wanting CEU's may attend free of charge. For more information contact Phyllis Sensat, Chair at donnygirl59@yahoo.com

MONROE REGION

By: Vacant, Chair

Check the website and Facebook for Regional Meetings in 2017-2018

For additional information contact: the Monroe Region at monroenasw@gmail.com

NEW ORLEANS REGION

By: Ron McClain, LCSW, JD, Chair

Check the website and Facebook for Regional Meetings in 2017-2018

All meetings are free for members and \$10 per CEU for non-members. Please email questions or RSVPs to NASWneworleans@gmail.com

SHREVEPORT REGION

By: Leesa L. Sitter, LCSW, DCSW

In August, Andrew Comeaux spoke on "Helping Clients Find Happiness". In September, Gary Tiemann spoke on "Reincarnation and Psychotherapy". Congratulations to Gary whose book was recently published on this topic. Social worker Kay Asher will be missed as she recently passed away.

In October, Nicholas Goeders, Ph.D., spoke on "Role of Stress in the Etiology and Treatment of Substance Disorders". In November, Rashad Cunningham spoke on "Healthy Blue Care Plan". Social Workers Susan Cunningham, Jacqueline Allen and Ellen Belchic will be missed as they recently passed away.

NASW National and NASW-LA website access

Both websites can be accessed for information by going to www.socialworkers.org or www.naswla.org. However, some information and registering for workshops requires you to be a member and you must log in.

You have a separate log in for the National site and the NASW-LA site. You can contact the National by calling 1-800-742-4089 and you can contact the NASWLA Chapter Office by calling 1-800-899-1984.



ASI's Member Care Unit

Starting Monday, June 2nd, we will bring to our headquarters in Frederick, MD., the call center operations for our Professional Liability Insurance, now called ASI's Member Care Unit.

Our phone number will remain the same (1.855.385.2160), however there will be a few changes that will add great value to our phone operations:

- ◆ Our members will now be able to be transferred directly to a Licensed Insurance Specialist for additional assistance, or to one of our policy administrators for group insurance information.
- ◆ Our hours of operation will be Monday thru Friday from 8:30 am- to 5:00 pm Eastern Time, and members who need after-hours assistance will have the option to email us for urgent matters.

Ethics Questions & Dilemmas

As a service to members, the Office of Ethics and Professional Review (OEPR) provides ethics consultations for current NASW members. Ethic consultations are a resource for members who are experiencing an ethical dilemma. We do not provide advice or tell members what to do. However, we do guide them through the Code and point them to the areas of the Code that address their concerns. We provide dialogue and considerations that allow members to make ethical decisions. We may also refer members to the appropriate resources if their questions do not appear to be related to ethics but are more related to legal issues or standards of practice.

Hours & Contact Info
(800) 638-8799 ext. 231

Mondays & Wednesdays
1:00 pm - 4:00 pm (ET) Ext 223

Tuesdays & Thursdays
10:00 am - 1:00 pm (ET) Ext 231

RENEW ONLINE! Fast, Easy, Convenient



NASW members can renew their memberships online. If your membership expires within the next three months, you are eligible for online renewal.

1. Go to www.socialworkers.org
2. Click on "Member Log In."
3. Enter your NASW username and password.
4. Click on "Member Center."
5. Click on "Renew your NASW Membership Online."

You can also renew by phone at 1-800-742-4089.

New Member Application and Renewal Notice Changes

Recently the National Office made changes to the mailing address and fax number on the New Member Application form. A new application is available on the National website at www.socialworkers.org or via the link on the Louisiana Chapter's website at www.naswla.org. The new address is: P.O. Box 791343, Baltimore, MD 21279-1343 and the fax number is 888-551-6096. Please note that membership applications must be mailed to the National Office at the address above.

NASW National Member Center

Your Membership Information Is Important to Us! Help us better serve you by keeping your contact information up-to-date.

If there are address, telephone, or e-mail changes you need to make, designations you need to add, or you need to list your specialty practice, go to the National NASW webpage: www.socialworkers.org and make the changes online.

How can an NASW Member update their Membership Information On Line?

The national office of NASW has announced that an NASW member can update their membership information on line and help to keep your information up to date and current.

The steps are as follows:

Go to www.socialworkers.org

Click on "member's login" and log in.

Click on "update your member profile".

Click on "edit" to update.

Make the changes and click "submit" to complete the process.

By each member making the necessary changes to their information, this will not only make sure that they receive the information from the National office in a timely manner, but from their Chapter office also as we receive your address information from National on a monthly basis.

If you have any problems with the online update, please contact the National office at 1-800-638-8799 and ask for Membership.

If you do not have access to a computer to update your information online you can call the Louisiana Chapter office at (225)346-1234 or (800)899-1984 or email them at info@naswla.org, with the information that needs to be changed or fax the information to (225)346-5035.

Please act now! We need to know how to find you!

Thank You, The Staff and Board of the Louisiana NASW Chapter

National Social Work Finder – Important Update

The Finder connects consumers with licensed social workers quickly at www.HelpStartsHere.org. The Finder is free to the consumer and is an excellent opportunity for licensed social workers to promote their services, practice and organization. Listings cost \$25.00. This fee is waived for social workers with a current Qualified Clinical Social Worker (QCSW) credential - another benefit for NASW members.

It is important that Licensed MSW and BSW social workers register on the [National Social Worker Finder](http://www.NationalSocialWorkerFinder.org) online search tool and take advantage of the benefits. The success of the Finder will help ensure the success of the new consumer Website – www.HelpStartsHere.org – and the National Social Work Public Education Campaign.

The public benefits. Social workers benefit. Your chapter benefits.

Members Only Legal Consultation

The Office of General Counsel in the NASW national office has created a new members-only consultation phone line.

Members-Only Legal Consultation Calls: Calls are answered Monday through Thursday from 11:00 to 4:30 ET. All members should be referred through Member Services (800) 742-4089, or directly to the Consultation Line at (202) 408-8600, ext. 592. The member can leave a message, and the call will be returned from the Office of General Counsel. The member can also leave an email address so that resources can be provided if appropriate.

NASW-LA Welcomes New Members

Alexandria Region

Cereceres, Elizabeth
Gilchrist, Jennifer
Greer, Angel

Baton Rouge Region

Brown, Derione
Collins, Emelda
Dykes, Maryann
Farris, Shailindra
Hoag, Nancy
Kleinpeter, Alicia
Martinez, Laura
Newman, Dakota
Pourciau, Jenna
Robertson, Gabrielle
Whitmore, Barbara
Wicker, Juequita

Florida Parishes Region

Beacham, Lucinda
Cutrer, Charity

Houma Thibodaux Region

Carter, Lashawn

New Orleans Region

Collins, Khalilah
Conley, Marlonika
Davidson, Victoria
Fields, Kindsey
Hill, Chloe
Quinn, Nina
Robinson, Jenifer
Wright, Robert

Shreveport Region

Martin, Chasity



Welcome to all of our new members.

We look forward to meeting
you at our regional
meetings, sponsored workshops and
the annual conference.

Check the NASW-LA
website out at www.naswla.org.

Attend the regional
meetings and get involved.
Volunteer opportunities are
available,
check with your
Regional Chair.

Benefits of NASW-LA Membership

- Be a part of the largest organization of professional social workers in the United States. We have over 130,000 in U.S. and Louisiana has 1,600 members.
- Since we are accessible on more of a local level, there are more opportunities to attend educational and networking meetings and conferences.
- Great way to build your network of colleagues and friends.
- Plus, for members only, you get many discounts and services, such as workshops and annual conference, car rental, hotel, credit cards, etc.
- NASW has liability insurance that can cover you if a client may files grievance.
- There is also other insurance offered including group term life, long-term liability, hospital daily cash, or accidental death & dismemberment.
- NASW gets involved in legislative issues that affect their members and the members' clients. We have PACE (Political Action Candidate Election) to help elect people to political office who have similar values.

Join NASW On-Line at www.socialworkers.org or
call 1-800-638-8799 for a mailed application.



Social Workers Help starts here.

National Association of Social Workers – Louisiana Chapter
700 North 10th Street – Suite 200 – Baton Rouge, LA 70802
225-346-1234 * (Fax) 225-346-5035 * 800-899-1984

Continuing Education Program

Karen D. Smith, Program Director

Our December 2017 Yellow Book offerings were well attended, at least on the first day. Then along came the snow and changes had to be made for the Friday workshops. As of this writing, I am waiting on the packets to be sent back to me to see what we are dealing with regarding transfers and/or refunds for those that were not able to make it on Friday.

It is my understanding that the Alexandria Advanced Supervision and Ethics workshops were well attended and only a couple of people were not able to make it.

In Baton Rouge, the Prep Test Workshop took place on Thursday and then Dr. D made arrangements with the attendees to send them the CD for the second day at only the cost of postage.

We are receiving registrations for the upcoming workshops in January and then through June 2018. You can register online or print out the registration form and fax or email or mail it to us to process.

Thank you so much for continuing to support NASW-La. We hope you all have a wonderful Holiday Season.

See you in 2018.

Annual Conference 2018

Karen D. Smith, Program Director



SOCIALWORKERS
leaders. advocates. champions.

The 2018 NASW-LA Annual Conference Registration brochure is at the printer and will be mailed to all licensed social workers in the State of Louisiana later this week. We are very excited about the program that we have for this year and believe that you all will enjoy the workshops and the presenters.

The brochure is available online now for you to print out or view. Online registration is available. If you have any questions, please let us know.

This year's logo is to the left and the t-shirts will be a light purple in the "comfort colors". The Registration form for t-shirts is included in the registration brochure.

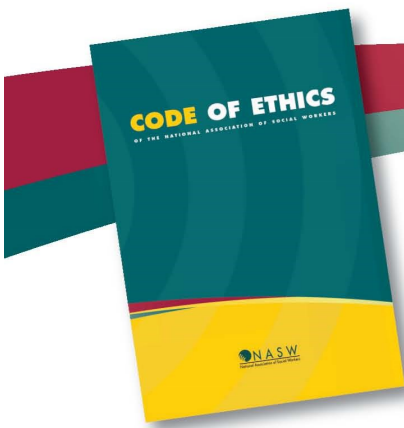
The Chapter Office will be closed from December 25, 2107 through January 2, 2018. Happy Holidays!

SAVE THE DATE

2018 NASW-LA ANNUAL CONFERENCE

March 14-16, 2018

Hilton Capital Center Baton Rouge, LA



Delegate Assembly Approves Revisions to the *NASW Code of Ethics*

On Friday, August 4, 2017, the Delegate Assembly of the National Association of Social Workers (NASW) approved the most substantive revision to the *NASW Code of Ethics* since 1996. After careful and charged deliberation, the Delegate Assembly voted to accept proposed revisions to the *Code* that focused largely on the use of technology and the implications for ethical practice.

The *NASW Code of Ethics* continues to be the most accepted standard for social work ethical practice worldwide. With emergent technological advances over the last two decades, the profession could not ignore the necessity for more clarity around the complex implications of new forms of communication and relationship building through technology. As such, in September 2015 an *NASW Code of Ethics* Review Task Force was appointed by the NASW president and approved by the NASW Board of Directors.

A SPECIAL THANK YOU TO TASK FORCE CHAIR:

- » Allan Barsky, JD, MSW, PhD, National Ethics Committee (past chair)

Task Force Members:

- » David Barry, PhD, National Ethics Committee (past chair)
- » Luis Machuca, MSW
- » Frederic Reamer, PhD
- » Kim Strom-Gottfried, PhD
- » Bo Walker, MSW, LCSW, National Ethics Committee
- » Dawn Hobby, MSW, LICSW, director, NASW Office of Ethics and Professional Review

NASW Staff Contributors:

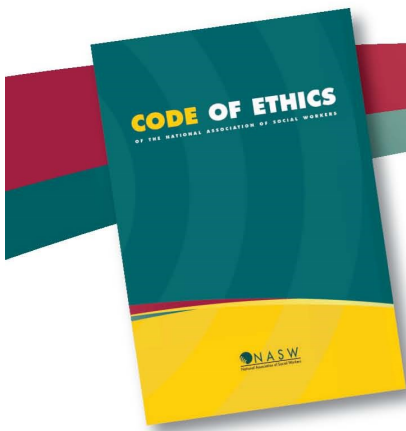
- » Andrea Murray, MSW, LICSW, senior ethics associate
- » Anne B. Camper, JD, MBA, NASW general counsel
- » Carolyn Polowy, JD, former NASW general counsel

The Task Force was charged with examining the current *Code of Ethics* through the lens of specific ethical considerations when using various forms of technology. In September 2015, they embarked on a year-long process that involved studying emerging standards in other professions and examining relevant professional literature, such as the Association of Social Work Boards' (2015) *Model Regulatory Standards for Technology and Social Work Practice*. In addition, Task Force members considered the technology practice standards that were concurrently being developed by a national task force commissioned by NASW, Council on Social Work Education, Clinical Social Work Association, and Association of Social Work Boards. A year later the proposed amendments were presented to the NASW membership for review, and many member comments were incorporated prior to finalization.

The approved *Code of Ethics* revisions reflect a collaborative and inclusive effort that drew from a diverse cross-section of the profession. The August 4 approval by the Delegate Assembly marks significant progress in the profession's ability to respond to our ever-changing practice environment.

The new version of the *NASW Code of Ethics* comes into effect January 1, 2018. In the meantime, training and technical assistance opportunities will be made available through the Office of Ethics and Professional Review and the NASW website.

Our sincere appreciation again to the task force, NASW staff, and committed members across the globe who contributed to this momentous accomplishment.



2017 Approved Changes to the *NASW Code of Ethics* FREQUENTLY ASKED QUESTIONS

1. When does the new *NASW Code of Ethics* go into effect?

The new *NASW Code of Ethics* goes into effect on January 1, 2018.

2. Where can I get a copy of the revised *NASW Code of Ethics*?

Copies of the revised *NASW Code of Ethics* will be available by November 1, 2017. You can pre-order a copy by calling NASW Press at 800.227.3590.

3. Which sections of the *NASW Code of Ethics* were updated?

The sections of the *NASW Code of Ethics* that were revised include:

The Purpose of the Code	1.16 Referral for Services
1.03 Informed Consent	2.01 Respect
1.04 Competence	2.06 Sexual Relationships
1.05 Cultural Competence and Social Diversity	2.07 Sexual Harassment
1.06 Conflicts of Interest	2.10 Unethical Conduct of Colleagues
1.07 Privacy and Confidentiality	3.01 Supervision and Consultation
1.08 Access to Records	3.02 Education and Training
1.09 Sexual Relationships	3.04 Client Records
1.11 Sexual Harassment	5.02 Evaluation and Research
1.15 Interruption of Services	6.04 Social and Political Action

4. What educational resources are available to explain the latest revisions to the *NASW Code of Ethics*?

Several resources will be available, including an online training, an NASW chat, a blog, code revision consults, and a posting of the changes with the explanations on the NASW website.

5. Which social workers are accountable to the *NASW Code of Ethics*?

Most social workers are held accountable to the *NASW Code of Ethics*, including NASW members, many licensed social workers, employed social workers, and students.

6. Do these changes affect social workers who aren't members of NASW?

Yes. The *NASW Code of Ethics* sets forth the values, principles, and standards that guide the profession as a whole. NASW members are formally bound to the *NASW Code of Ethics*, and social work licensees are also accountable as many states incorporate the *Code of Ethics* into their licensing statutes.

7. Who was responsible for revising the *NASW Code of Ethics*?

An *NASW Code of Ethics* Review Task Force was appointed by the NASW President and approved by the NASW Board of Directors.

8. How am I held accountable if I do not implement these changes by the effective date?

If you are a member of NASW, you may be held accountable through the NASW professional review process, if someone files an ethics complaint against you. You may also be held accountable by a state licensing board if a licensing board complaint is filed against you. Furthermore, you may be held accountable by your employer or your university, which may take disciplinary action for failure to adhere to the *NASW Code of Ethics*. Finally, you may be held accountable through a court of law that looks to the *NASW Code of Ethics* to establish the standard for professional ethical social work practice.

9. Have social work schools, employers, agencies, etc., been made aware of the changes?

NASW is working diligently to notify the social work profession and stakeholders using various communication channels, including print, social media, and web-based notices.

10. Who do I contact if I have additional questions?

The resources described in section four above should resolve most questions about the revisions. If you still have questions after these resources are made available, you may contact the Office of Ethics and Professional Review at ethics@socialworkers.org. Please include your telephone number and a return email address. Due to the potential volume of questions, it may take time to reply. We appreciate your understanding.



Brentwood

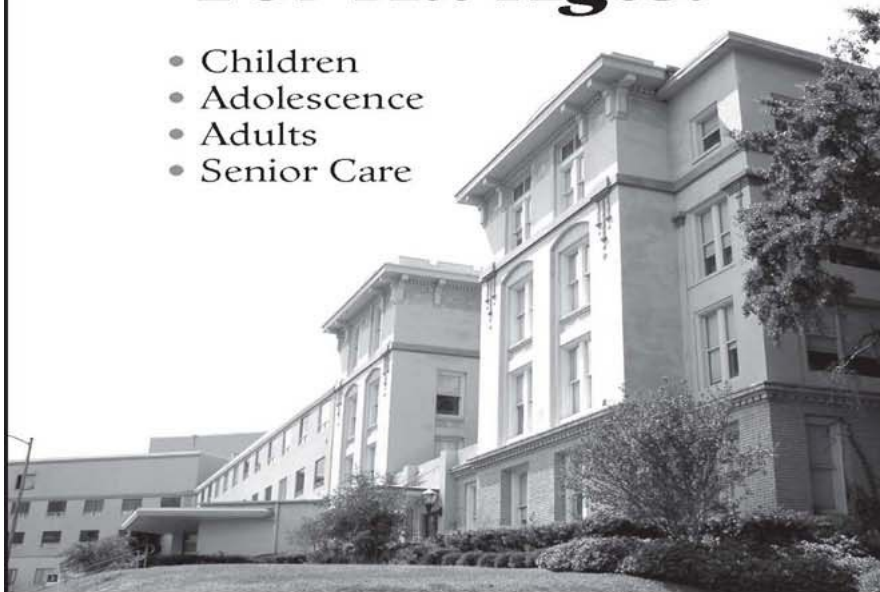
*Helping Families in Times
of Crisis Since 1971.*

Behavioral Health Services for:

- Child & Adolescent Problems
- Depression
- Suicidal Thoughts
- Severe Anxiety
- Psychosis
- Schizophrenia
- Alcohol & Drug Dependency
- Senior Care/Older Adult Issues

Treatment For All Ages:

- Children
- Adolescence
- Adults
- Senior Care



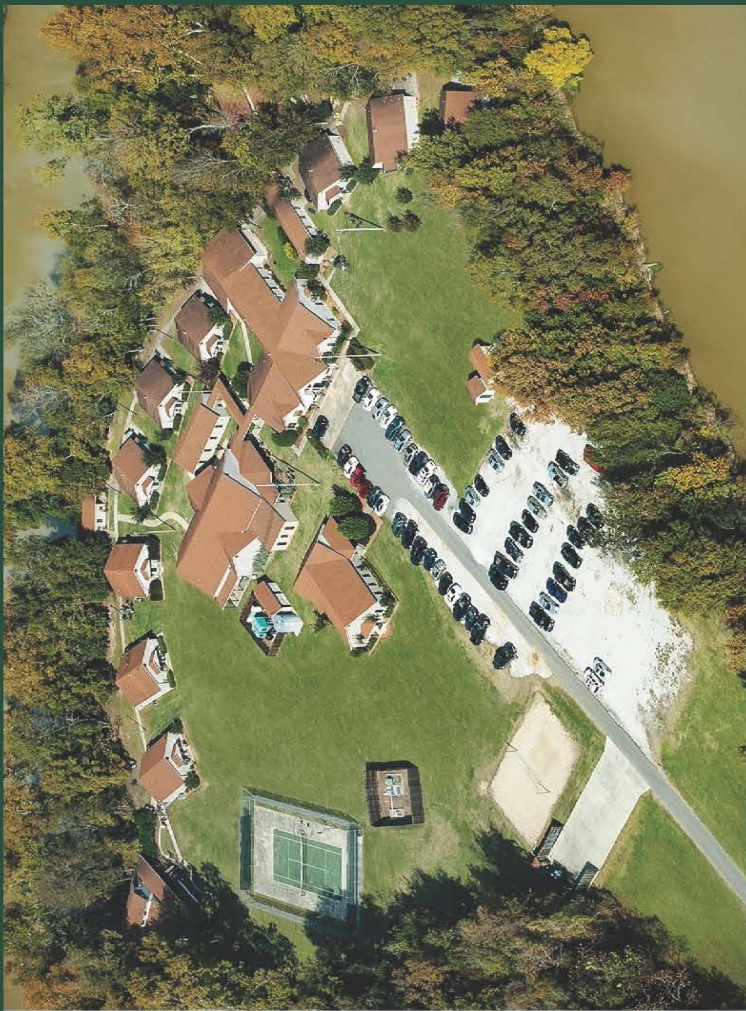
(318) 678-7500

(877) 678-7500

www.brentwoodbehavioral.com



1-800-203-6612
www.palmettocenter.com



Specializing in Treatment for:

- Substance Dependence
- Dual Diagnosis
- Other Co-Existing Addictions
- 3-Day Evaluation for Professionals
- 6-8 Week Relapse Track

Now Offering Intensive Outpatient Treatment Programs in Alexandria, Bossier, Lafayette, Lake Charles, and Monroe, Louisiana!



longleaf hospital

Psychiatric & Substance Abuse Treatment

44 Versailles Blvd.
Alexandria, La. 71303
(318) 445-5111

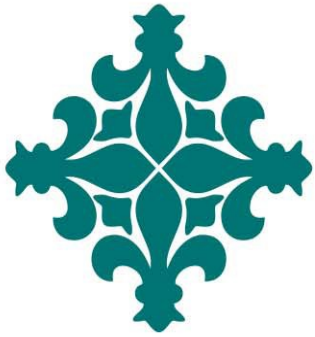
www.longleafhospital.com

1-800-737-3808



Greenbrier

BEHAVIORAL HEALTH HOSPITAL



WESTEND
HOSPITAL



Optima
SPECIALTY HOSPITAL



NASW-CA Online Program

Continuing Education
That Fits **Your Life**

Take courses anytime, anywhere
CEUs accepted in 40 states

FURNISHED OFFICES TO SUBLET AT 7341 JEFFERSON HWY., BATON ROUGE, LA 70806

Katherine Volk, LCSW, and Suzie Perry, LCSW,
are cutting their practices to part-time.

We have a tastefully decorated suite to sublet
for three to four days per week.

Our office is located in the center of town,
near Corporate Blvd.

Directly behind Town Center,
this is a desirable location.

The suite consists of a waiting room,
two therapists' offices, and a restroom.
Space available on Tuesdays, Thursdays,
Fridays, and Saturdays.

Reasonable fee includes shared rent,
cleaning services, Entergy,
use of WiFi, copy machine,
microwave and refrigerator.

Interested in subletting this space,
call Katherine Volk at 225-773-8314 or
Suzie Perry at 225-936-5512.

If you're not interested, please tell your friends.

LCSW CLINICAL SUPERVISION

Covington, Louisiana

**11 Years Clinical Experience
Individual and Group
Supervision available**

**Karen Kirk, LCSW-BACS
(985) 590-9034
www.karenmkirk.com**

NASW National and NASW-LA website access

Both websites can be accessed for information by going to www.socialworkers.org or www.naswla.org.

However, some information and registering for workshops requires you to be a member and you must log in. You have a separate log in for National site and the NASW-LA site.

You can contact the National office by calling 1-800-742-4089 and you can contact the NASWLA Chapter Office by calling 1-800-899-1984.

**Office space available. Lee Drive, Baton Rouge, near LSU.
Neat, comfortable. Reasonable rent.
Contact Joe Delatte, LCSW @ 225-766-8959.**



Private Practice Style Office for Rent

**Baton Rouge
Off Sherwood Forest near Interstate 12**

We have an office building uniquely designed for single therapists, arranged in an attractive setting along with other professionals (LCSW, LPC, Ph.D.).

The office is perfect for privacy - it has a designated, private waiting room for your clients only, and a separate exit door from your treatment room so your clients do not cross paths.

\$695 a month. Includes utilities, fax line and alarm system.

Email: drj@drjulienelson.com



Certified School Social Work Specialist (C-SSWS)

Social workers who hold the C-SSWS have:

- A current NASW membership;
- An MSW degree from an institution accredited by the Council on Social Work Education (CSWE);
- Documented two (2) academic years of paid, supervised, post-MSW experience as a school social worker in a school setting;
- Provided an evaluation from an approved supervisor;
- Provided a reference from an MSW colleague;
- One of the following: current ACSW, DCSW, current state exam-based social work license, current state exam-based school social work license/certification, or passing score on ASWB exam;
- and Agreed to adhere to the NASW *Code of Ethics*, the NASW *Standards for School Social Work Practice*, and the NASW *Standards for Continuing Professional Education*, and are subject to the NASW adjudication process.

Call the National Office at
202-408-8600 Ext: 409



DIA LEARNING PRESENTS: 5 NEW ON-LINE CONTINUING EDUCATION ETHICS COURSES FOR NASW-LOUISIANA

DIA Learning announces 5 programs now available in our ethics education series. Each course is approved for **12** Educational Hours for Social Workers by the NASW-Louisiana Chapter. The course topics are: Persistent Vegetative State (The Schiavo case), Patient Safety, Dying Well (End of Life Care), Stem Cell Research and NICU (Issues of Life and Death). The courses were developed with the busy professional in mind and contain high quality video documentary, text and quiz components. The courses can be accessed from any computer and completed at your own pace. The cost of each course is \$120. To sign up for or test drive the courses, logon to <http://ethicsprograms.com> or contact Dan Mueckl at danmueckl@dialearning.com or 314-533-4327.

yourceus.com your source for counseling ceus

ON-LINE CEUS

**Exceptional Quality of Learning
Convenient and Affordable
NASW Approved**

You can now get CEUs from the comfort of your home or office. yourceus.com offers high quality continuing education courses for social workers and other counseling professionals completely online in an easy to use format. Immediate access, no waiting to begin. Courses may be completed in one sitting or many sittings. Courses are certified by the National Approval Program of NASW for core and ethics hours in many states including Louisiana.

- **Ethical Decision Making: A Primer for Mental Health Clinicians** 5 contact hours
- **What Every Mental Health Clinician Needs to Know about Sexual Harassment** 3 contact hours
- **Assessment for Suicidality: A Primer for Mental Health Clinicians** 3 contact hours
- **Understanding Stress: An In-depth Guide for the Mental Health Clinician** 5 contact hours
- **Today's Street Drugs: A Detailed Overview for Mental Health Clinicians** 5 contact hours
- **Understanding Antidepressants: A Detailed Overview for Mental Health Clinicians** 4 contact hours
- **Leadership, Authority and Ethical Decision Making for the More Advanced Clinician** 5 contact hours
- **...and a number of other courses**

For more information, go to www.yourceus.com
or call us toll free at **888-247-1991**
(24 hour phone support)

Get Superior NASW-Endorsed Malpractice Coverage for Less!

Plus, we've added up to 15% additional discounts for individuals ... and, we've made it easier than ever!

How can NASW Assurance Services do this? We've learned a lot from our years of experience of program management, and designed a new program even more focused on NASW member needs and interests. And thanks to our new program administrator, CPH and Associates, we're able to pass on significant administrative cost savings to you in enhanced benefits and better pricing.



PROGRAM HIGHLIGHTS:

- NASW Risk Retention Group is licensed and regulated by the federal government and receives strong A rated backing from Lloyd's, London, known for its 324-year track record of paying every valid policyholder claim.
- Includes benefit from Prior Acts Coverage, making new, enhanced program benefits retroactive to your current policy initiation date provided you had continuous NASW coverage and your application is approved during underwriting.
- This is the only program endorsed by NASW with NASW ASI management, oversight and advocacy on your behalf to keep costs low, enhance benefits, and assist members unfairly turned down for coverage or renewal.
- You can save money with NEW 5% on-line application discount and 10% risk management education discounts (for individuals).
- Enjoy extended customer service hours (evenings and Saturdays) and easy on-line enrollment process with same day policy and proof of coverage once accepted.

ENHANCED BENEFIT HIGHLIGHTS:

- **Enhanced:** \$35,000 Licensing Board Coverage and \$35,000 Wage Loss Coverage automatically included (up from \$5,000 each)
- **New:** Health Information – HIPAA Privacy Coverage (\$25,000)
- **New:** Emergency First Aid Coverage (\$15,000)
- **New:** First Party Assault Coverage (\$15,000)
- **New:** Medical Payments Coverage (\$50,000)

PLUS ... you now have access to a lawyer-staffed Risk Management Help Line to answer your claims-related questions.

- Supplemental Liability Coverage (for clients tripping and falling in office)
- No deductible
- Your choice of coverage amounts from \$1 million/ \$3 million up to \$2 million/\$4 million (or up to Virginia requirements)



Don't assume that renewing your old policy automatically gives you enhanced coverage! To obtain the enhanced, new policy you must take action: call 855-385-2160 or enroll at www.naswassurance.org/pli/professionals. It's quick and easy!

REFRESH YOUR HIPAA Training

NASW is Here to Help

MEMBERS: \$35 for one course
\$99 for multi-course package

NON-MEMBERS: \$45 for one course
\$129 for multi-course package

The 2013 Omnibus HIPAA Rule establishes new requirements for health and mental health professionals. NASW's Legal Defense Fund and its partner, Medelearn, have updated the online HIPAA training courses tailored for social workers. These include HIPAA privacy and security as well as HITECH Act provisions. Who should take these courses? Any social worker who works in a setting or practice where insurance companies are billed directly for services will benefit.

- Engaging e-learning experiences including professional graphics and work scenarios.
- Basic and Advanced level courses.
- Instant test scores. Test until you pass!
- Immediate access to print "Certificate of Completion" for audits.
- One-year access to course content.
- CE Credits earned (in some states).

For more information visit: www.medelearn.org/nasw



medelearn



Membership in NASW is an Investment in Your Career

Whether you are a social work student or degreed professional, whether you work with clients or with communities or organizations, the National Association of Social Workers (NASW) has the resources and professional development opportunities to enhance your education, build your career, and advance you as a social work professional.

**Partner with the
Association that
supports your studies,
work, and career.
JOIN NASW TODAY.**

**www.socialworkers.org
202.408.8600 ext. 499
800.742.4089**

- Entry into a community of nearly 150,000 colleagues who support each other and the profession
- Automatic chapter membership at no additional cost for a local connection to continuing education, news, and issues affecting social work practice where you live or work
- Discounted membership rates for students and social workers just entering the field
- Access to career advancement services of the NASW online career center, including résumé, cover letter, and interviewing tips, and all features of JobLink, NASW's social work job bank
- Multiple opportunities throughout the year to take free webinars and earn CE credit
- Free NASW WebEd online courses that offer CE credit
- Specialty sections for practice-specific information and resources, member-to-member networking, and opportunities to earn additional free CE credit
- Professional credentials that can energize your career and increase your marketability
- Affordable professional liability and personal insurance for protection on the job and at home
- Members-only information on legal issues affecting the profession
- Advocacy on Capitol Hill for the future of our profession and viability of our workforce for years to come

www.socialworkers.org

50 THINGS YOU CAN DO AS A MEMBER OF NASW

- 1) SUPPORT YOURSELF AND YOUR PROFESSION THROUGH *YOUR* PROFESSIONAL ASSOCIATION.
- 2) AFFIRM YOUR COMMITMENT TO THE NASW CODE OF ETHICS.
- 3) RECEIVE THREE MEMBERSHIPS FOR ONE PRICE: NATIONAL, STATE, AND LOCAL.
- 4) RECEIVE 10 ISSUES ANNUALLY OF THE AWARD-WINNING ***NASW News***.
- 5) DEPEND UPON PAID PROFESSIONAL NATIONAL AND CHAPTER STAFF WORKING DAILY FOR YOU AND ON YOUR BEHALF.
- 6) NETWORK WITH LOCAL SOCIAL WORKERS AT REGULAR BRANCH MEETINGS.
- 7) MAKE A DIFFERENCE BY JOINING WITH OTHER SOCIAL WORKERS IN ADVOCACY EFFORTS TO PROTECT VULNERABLE POPULATIONS AND NEEDED SERVICES.
- 8) LEARN THE LATEST INFORMATION ABOUT SOCIAL WORK LICENSURE IN TENNESSEE.
- 9) GAIN PROFESSIONAL RECOGNITION FROM THE SOCIAL WORK PUBLIC IMAGE CAMPAIGN.
- 10) UTILIZE NATIONAL AND STATEWIDE TOLL-FREE INFORMATION LINES FOR MEMBERS.
- 11) ACCESS "MEMBERS ONLY" SECTIONS OF YOUR OWN NATIONAL PROFESSIONAL WEBSITE: WWW.SOCIALWORKERS.ORG.
- 12) KEEP UP TO DATE ON INFORMATION IMPACTING SOCIAL WORKERS IN TENNESSEE THROUGH REGULAR MEMBER E-NEWSLETTERS.
- 13) RECEIVE MEMBER ONLY ACCESS TO EXCELLENT MALPRACTICE INSURANCE AT GREAT RATES.
- 14) BE PROTECTED BY PROFESSIONAL LOBBYING FOR YOU AND YOUR PROFESSION AT THE STATE AND NATIONAL LEVEL.
- 15) HELP ELECT PACE-ENDORSED CANDIDATES SUPPORTING SOCIAL WORK ISSUES.
- 16) RECEIVE A 20 – 30% DISCOUNT AND BE NOTIFIED FIRST ABOUT NASW CONTINUING EDUCATION EVENTS IN YOUR AREA AND ACROSS THE STATE.
- 17) HAVE YOUR QUESTIONS ANSWERED ON LICENSURE AND ETHICS.
- 18) RECEIVE INTERNET ACCESS TO THE PROFESSION'S PREMIERE JOURNAL, ***SOCIAL WORK***.
- 19) TAKE ADVANTAGE OF LEADERSHIP OPPORTUNITIES IN LOCAL, CHAPTER, AND NATIONAL POSITIONS.
- 20) PARTICIPATE IN, OR BENEFIT FROM, STATEWIDE COMMITTEES INCLUDING CONTINUING EDUCATION, ETHICS, LEGISLATIVE AND MEMBERSHIP SERVICES.
- 21) DEVELOP NEW SKILLS THROUGH VOLUNTEERING.
- 22) ATTEND QUALITY CONTINUING EDUCATION ACTIVITIES ORGANIZED BY THE CHAPTER AND AT YOUR LOCAL BRANCH LEVEL. FREE ON-LINE CEUs ARE ALSO BEING PROVIDED ON THE NATIONAL WEBSITE.
- 23) LEARN ABOUT WORKSHOPS OFFERED BY OTHER ORGANIZATIONS THAT HAVE RECEIVED CEU APPROVAL FROM NASW.
- 24) JOIN OVER 50,000 MEMBERS IN THE ACADEMY OF CERTIFIED SOCIAL WORKERS (ACSW).
- 25) HAVE YOUR CLINICAL SKILLS NOTED BY OBTAINING THE DIPLOMAT IN CLINICAL SOCIAL WORK (DCSW).
- 26) LEARN ABOUT YOUR RIGHTS AND RESPONSIBILITIES THROUGH LEGAL BRIEFS AVAILABLE TO ASSIST MEMBERS IN UNDERSTANDING LEGAL ISSUES THAT IMPACT THE PROFESSION.
- 27) USE "SOCIAL WORK SPEAKS" TO FIND NASW POLICIES ON MAJOR HUMAN SERVICES ISSUES.
- 28) USE THE SOCIAL WORK FINDER ON WWW.HELPSTARTSHERE.ORG TO RECRUIT NEW CLIENTS AND LOCATE SOCIAL WORKERS AROUND THE NATION.
- 29) OBTAIN CERTIFICATION IN YOUR SPECIALTY AREA.
- 30) BE RECOGNIZED AND RECOGNIZE OUTSTANDING SOCIAL WORK PRACTICE THROUGH LOCAL, STATE AND NATIONAL "SOCIAL WORKER OF THE YEAR" AWARDS.
- 31) JOIN A SPECIALIZED PRACTICE SECTION FOR NETWORKING, IDEA-SHARING, AND ADDITIONAL INFORMATION.
- 32) PARTICIPATE IN GRASSROOTS LEGISLATIVE ADVOCACY AT LOCAL, STATE, AND NATIONAL LEVELS ON SOCIAL JUSTICE AND PROFESSIONAL ISSUES.
- 33) RECEIVE ACCURATE INFORMATION ABOUT SOCIAL WORK SALARIES IN TENNESSEE.
- 34) USE THE LIBRARY/VIDEO SERVICES FROM THE CHAPTER OFFICE.
- 35) ACCESS SPECIFIC INFORMATION ABOUT STANDARDS FOR YOUR FIELD OF PRACTICE.
- 36) ADVERTISE YOUR OWN SERVICES AND WORKSHOPS TO OTHER SOCIAL WORKERS AT LOW COST.
- 37) BENEFIT FROM NASW'S EFFORTS TO DEFINE WHAT SOCIAL WORK IS AND DOES FOR THE PUBLIC, THE MEDIA, AND THE LEGISLATURE.
- 38) RECEIVE REGULAR LEGISLATIVE UPDATES ON PROPOSED LEGISLATION IMPACTING SOCIAL WORKERS AND OUR CLIENTS.
- 39) HELP DISPEL MYTHS ABOUT SOCIAL WORK.
- 40) USE CONTACTS FOR SOCIAL WORK INFORMATION IN ALL 50 STATES.
- 41) GET ASSISTANCE WITH EMPLOYMENT AND LICENSURE WHEREVER YOU RELOCATE.
- 42) PURCHASE T-SHIRTS, COFFEE MUGS, AND OTHER ITEMS THAT CELEBRATE YOUR PROFESSION.
- 43) PARTICIPATE IN SOCIAL WORK MONTH AND 'SOCIAL WORK DAY ON THE HILL' ACTIVITIES.
- 44) ADVANCE PROFESSIONALLY BY PUTTING NASW MEMBERSHIP ON YOUR RESUME.
- 45) SIGN UP FOR SPECIALTY JOURNALS OR A SPECIALITY PRACTICE SECTION WITH INFORMATION AND CEUs IN YOUR AREA OF PRACTICE.
- 46) GET MEMBER DISCOUNTS ON RENTAL CARS, HOTELS AND OFFICE PRODUCTS.
- 47) SHOP NASW PRESS'S VIRTUAL BOOKSTORE: WWW.NASWPRESS.ORG.
- 48) GET GROUP INSURANCE FOR TERM LIFE, DISABILITY, HOSPITAL DAILY CASH, AND ACCIDENTAL DEATH.
- 49) HELP PROTECT THE PUBLIC FROM UNETHICAL SOCIAL WORK PRACTICE.
- 50) ... AND THE LIST COULD GO ON AND ON AS THOUSANDS OF SOCIAL WORKERS JOIN TOGETHER FOCUSED ON OUR CORE VALUES OF *SERVICE, SOCIAL JUSTICE, DIGNITY AND WORTH OF THE PERSON, IMPORTANCE OF HUMAN RELATIONSHIPS, INTEGRITY AND COMPETENCE.*

BOARD OF DIRECTORS

PRESIDENT

Patti Gates, LCSW, C-SSWS, ACSW
Lake Charles

FIRST VICE PRESIDENT

Carolyn R. Read, LCSW, ACSW, C-SSWS
Alexandria

SECOND VICE PRESIDENT FOR BUDGET & FINANCE

Worlita Jackson Williams, LCSW
Shreveport

SECRETARY

Derrick Stevenson, MA, LCSW, Ph.D.
Shreveport

BSW MEMBER-AT-LARGE

Jasmine Wilson, LMSW
Franklinton

ALEXANDRIA REGION

Latonya Charles, LMSW, Chair

BATON ROUGE REGION

Carmen P. Williams, Ph.D., LMSW, Chair
Edgar P. Guedry, LCSW-BACS, ACSW,
CHPCA, A-CHR-SW

FLORIDA PARISHES REGION

Adrienne Garner, LCSW-BACS, Chair

HOUMA-THIBODAUX REGION

Jamilah Olivier, LCSW-BACS, MCJ, Chair

LAFAYETTE REGION

Crystal Rodriguez, LMSW, Chair

LAKE CHARLES REGION

Phyllis Sensat, LCSW, Chair

MONROE REGION

Christianna Darrington-Clark, LMSW,
Chair

NEW ORLEANS REGION

Ron McClain, LCSW, JD, Chair
Annsley Stoma, LMSW

SHREVEPORT REGION

Loreta Leavitt, LMSW, Chair

MSW STUDENT REPRESENTATIVE

Fa'Tonia Beaudoin
Grambling

BSW STUDENT REPRESENTATIVE

Kadasjah McMillon
Southern University, Baton Rouge

EXECUTIVE DIRECTOR



Social Workers
Help starts here.

National Association of Social Workers
Louisiana Chapter
700 North 10th Street, Suite 200
Baton Rouge, LA 70802
(800) 899-1984 or (225) 346-1234
FAX (225) 346-5035

Non-Profit Organization
U.S. Postage
PAID
Permit #1469
Baton Rouge, LA

SAVE the DATE

2018 NASW-LA Annual Conference

March 14 - 16, 2018

Hilton Capitol Center

Employment Opportunities

Please visit our website, www.naswla.org,
for more information on the employment opportunities that we have become aware of.

Join the NASW Advocacy Network Listserv

Take Action on the Federal Issues Important to Social Workers!
By joining the advocacy network listserv, you will receive periodic updates
and action alerts, geared specifically to the areas in which you indicate an interest,
via e-mail from NASW's government relations staff.

To join NASW's advocacy network listserv,
please visit www.socialworkers.org/advocacy/networkNew.asp.

Send a Letter to Your Member of Congress
NASW's Congress Web system assists you in preparing and sending
e-mails or letters on key federal issues to your Members of Congress.

To proceed directly to Congress Web,
please <http://63.66.87.48/cweb4/index.cfm?orgcode=NASW>

ADVERTISING

Call the Chapter Office for details regarding sponsorships, advertising and links to the website. Publishing ads in the NASW-LA Newsletter and/or on the NASW-LA website is at the discretion of the association and the association reserves the right to deny placement.

DEADLINE DATES

Deadline Dates vary according to the publication of the newsletter. Generally, the 15th of the month is the deadline for all newsletter information. The newsletter is scheduled to go to print quarterly.